

# Early Learning Center

---

## CEE-LOCK

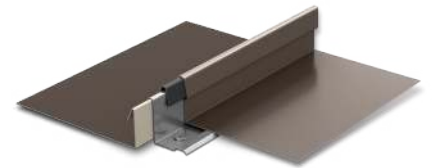


*Mount Prospect, IL*

## PROJECT DETAILS

---

- Panel: Cee-Lock
- Color: Shasta White
- Architect: Robin Randall with Legat Architects
- General Contractor & Installer: Metalmaster-Roofmaster



**Cee-Lock**

Legat Architects designed the Early Learning Center to feature the Berridge Manufacturing Company's Cee-Lock Panel in Kynar 500®/Hylar 5000® Shasta White. Metalmaster-Roofmaster installed over 700 squares of Cee-Lock on the roof, wrapping it onto the walls of this school creating a unique affect. The high reflectivity, emissivity and solar reflectance of Shasta White is an optimal choice for reducing energy consumption. Cee-Lock is a snap-lock panel that offers an optional extruded Vinyl Weatherseal into the seam. These features allow it to meet many wind and water resistant test requirements and make it an ideal choice for the northern climate needs of this school located close to Lake Michigan in Mount Prospect, IL. Cee-Lock may be roll formed on-site with Berridge's CL-21 portable roll former or it is available from the factory in continuous lengths to a maximum of 40'. This panel is available smooth or with optional striations and in two coverage options, 16 ½" (standard) and 11 ½" (limited availability).



---

To request samples or more information please contact:  
[www.berridge.com](http://www.berridge.com)  
(800) 669-0009  
[sales@berridge.com](mailto:sales@berridge.com)