

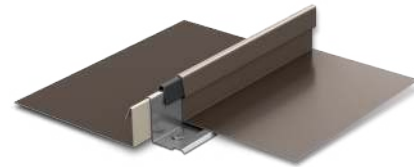
Marie C. Graham Elementary

CEE-LOCK



PROJECT DETAILS

- Panel: Cee-Lock
- Color: Royal Blue
- Architect: Wakely Associates
- General Contractor: Barton Malow Company
- Installer: Esko Roofing & Sheet Metal, INC.



Cee-Lock

On the campus of Marie C. Graham Elementary is the district's Early Childhood Center. Architect firm Wakely Associates designed the building including the center vestibule.

Brian Smilnak, co-owner of Wakely Associates stated, "We chose the Berridge Cee-Lock standing seam panel for longevity and a crisp appearance. The bold Royal Blue color worked well with the playful interior color pallet". Installers, Esko Roofing & Sheet Metal, INC. applied the concealed fastener, standing seam Cee-Lock Panels to the vestibule. This panel has extensive testing ratings, to include UL Classifications: UL-589, UL-90, UL-1897, UL-79 and UL-2218. The minimal maintenance qualities of this panel make it an ideal for schools and provide for a long-lasting, aesthetically pleasing roof solution. This panel is available in two coverage options, 16 1/2" or 11 1/2". The 16 1/2" profile may be site formed in continuous lengths with the Berridge CL-21 roll former. Both profiles are available from the factory in continuous lengths to a maximum of 40'. The Cee-Lock panel is available in 24 and 22 Gauge Steel and 0.032 Aluminum (consult BMC for material availability for the 11 1/2" panel).



To request samples or more information please contact:
www.berridge.com
(800) 669-0009
sales@berridge.com