

Cee-Lock (11 1/2") Roll Former

BERRIDGE CL-16



MATERIAL

24 GA and 22 GA Galvalume®
0.032 Aluminum

COIL & COVERAGE

Coil Size: Nominal 16" (15 7/8")
Coil Quantity: Requires 139.13 SF of coil per square of coverage

SALE & LEASING INFORMATION

Sale Price: Not Currently Available
Non-Licensee Lease: \$1,200/wk for 1st 2 weeks,
\$900/wk thereafter
Licensee Lease: \$600/wk
Long Term Lease: Consult BMC for availability

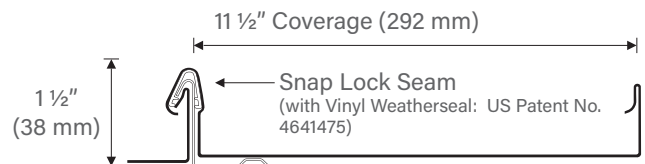
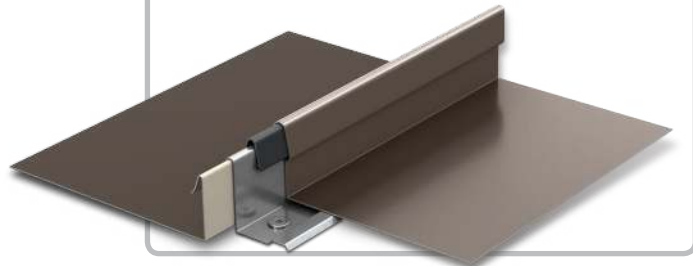
ACCESSORIES

Cee-Lock Clips: 45 clips per square of coverage
Continuous Cee-Rib: Requires 104.35 LF per square of coverage
Vinyl Weatherseal: 104.35 LF per square of coverage



Pictured Above
Project: Homes Jr. High School
Architect: Robin Randall with Legat Architects
Installing Contractor: Metalmasters
Color: Shasta White

The Berridge Model CL-16 Portable Roll Former forms continuous-length Berridge Cee-Lock (11 1/2") Panels. Berridge Cee-Lock panels have an integrated snap-lock seam with an optional patented vinyl weatherseal that can be applied during the roll forming process. The 11 1/2" Cee-Lock panels are only available in a smooth finish. Use individual factory formed Cee-Lock Clips or Continuous Cee-Ribs over solid sheathing.



SPECIFICATIONS

Mounted on heavy duty 4-wheel table
Width: 34" **Length:** 146" **Height:** 60"
Weight: 3,080 lbs with shipping cover

- 2 HP electric motor - 220V single-phase current
- High Speed - 45' per minute
- Built-in uncoiler (up to 2,000 lb coil)
- Stainless steel heat-treated, hardened rollers
- Unique side production for ease of operation
- Mechanical slitter shear
- Accurate-length gauge (computer optional)
- Continuous-length panels, based on coil size
- All sealed bearings
- Coil handling apparatus included
- Sliding panel support wheel
- Machine inserts vinyl weatherseal (optional)



CORPORATE HEADQUARTERS

2610 Harry Wurzbach Road

San Antonio, TX 78209

(800) 669-0009

www.Berridge.com